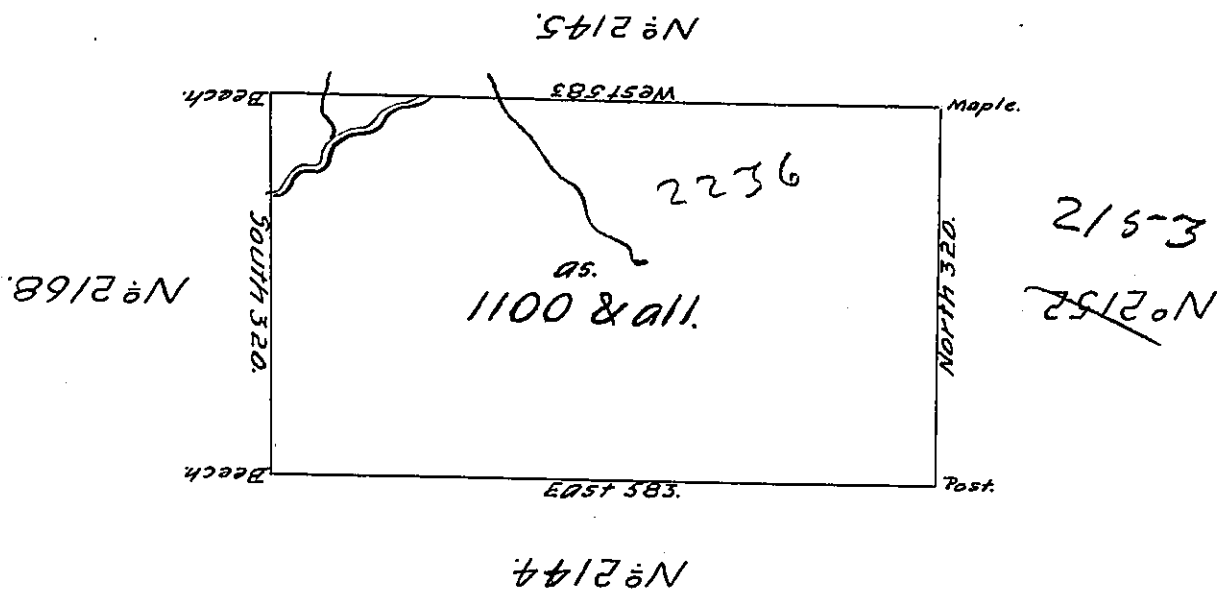


N<sup>o</sup> 28.



Situate about four Miles North of the Allegany River and two Miles East of the Canoe place in North<sup>e</sup> County containing 1100 Acres and the Usual Allowance for Roads &c.

Surveyed June 6<sup>th</sup> 1793 for Robert Gilmore in persewance of a Warrant N<sup>o</sup> 2236 bearing date the 12<sup>th</sup> December 1792.

John Caran, D. S.

Daniel Brodhead Esq<sup>r</sup> S. G.

IN TESTIMONY that the above is a copy of the original remaining on file in the Department of Internal Affairs of Pennsylvania, made conformably to an Act of Assembly approved the 16th day of February, 1833, I have hereunto set my Hand and caused the Seal of said Department to be affixed at Harrisburg, this fourth day of November 1904.

*Loac P Brown*  
 Secretary of Internal Affairs.